



**Wallingford, CT**

**By: Ahearn-Rogers, LLC**



[www.calcagni.com](http://www.calcagni.com)

330 SOUTH MAIN STREET, CHESHIRE, CT 06410 PHONE: 203-272-1821

2620 WHITNEY AVENUE, HAMDEN, CT 06518 PHONE: 203-288-1821

37 BROADWAY, NORTH HAVEN, CT 06473 PHONE: 203-234-1821

924 NORTH MAIN STREET EXT., WALLINGFORD, CT 06492 PHONE: 203-265-1821



## **Information & Sales Procedures**

**August 1, 2007**

1. Yalesville on the Green is a new condominium community of 49 well appointed, luxury ranch style 1 and 2 bedroom condominiums.
2. Buyer may reserve a unit with a \$1000 refundable deposit and binder. The Purchase and Sales Agreement must be executed within 7 days of the binder.
3. The Project managers will assist in the writing of all Binders and Purchase and Sales agreements.
4. All Purchase and Sales agreements must be submitted with a 10% down payment.
5. Buyers will receive 30 days to obtain a mortgage commitment if financing.



**Project Managers: Carol Spaulding (203) 284-1822 Ext 214 or  
Paula Borzillo (203) 284-1822 Ext 238**

**Calcagni Associates Real Estate, 924 North Main Street Ext., Wallingford, CT 06492**

**[www.calcagni.com](http://www.calcagni.com)**



## Features and Amenities

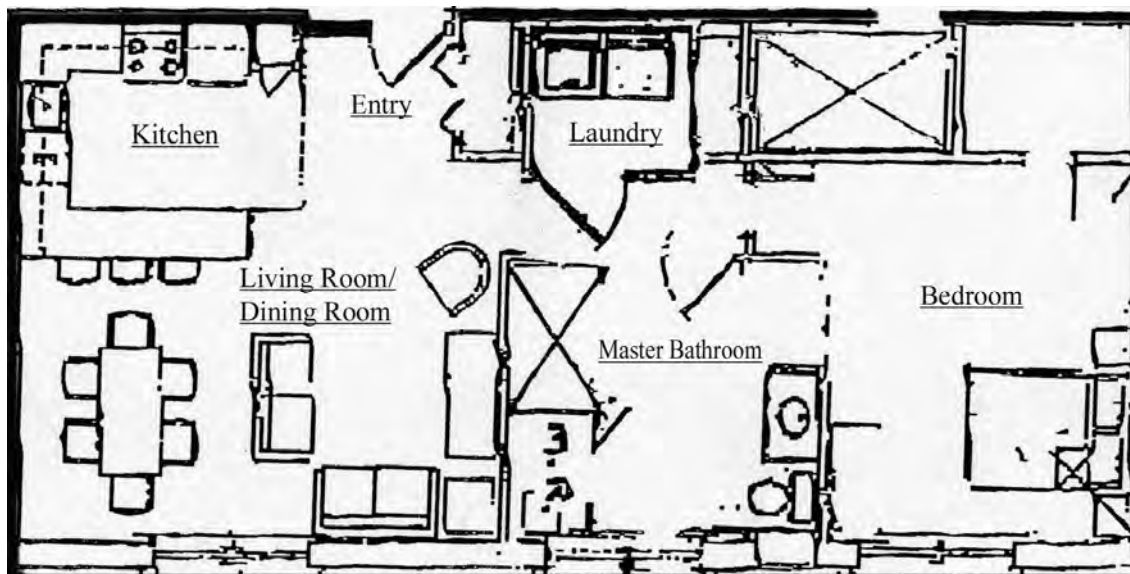
- ↪ Spacious 1 and 2 bedroom floor plans.
- ↪ Kitchens include raised panel cabinets (maple, oak or red birch) with many custom features
- ↪ Appliances include GE range, refrigerator, microwave, dishwasher, disposal, & Whirlpool washer and dryer
- ↪ Ceramic tile flooring in kitchen, dining area, and baths
- ↪ Wall to wall carpet in living room and bedrooms
- ↪ Raised panel interior doors with lever style handles
- ↪ Heat lamps in all baths
- ↪ Gas heat and Central air conditioning
- ↪ Exercise room with cardio equipment and universal gym.
- ↪ Cable TV available
- ↪ Controlled access entrance with security intercom
- ↪ Elevators to all floors
- ↪ Some units with views of Quinnipiac River
- ↪ Well maintained grounds, BBQ / picnic area, & patio
- ↪ Plentiful parking. Many units include covered parking
- ↪ Enclosed storage area
- ↪ Convenient location with easy access to highways and public transportation
- ↪ Walking distance to local restaurants and shops

# Yalesville On the Green

*By Ahearn-Rogers LLC*

*Affordable Luxury in  
New Ranch Style Condominiums*

## **Unit 27**



**903 sq. ft.**

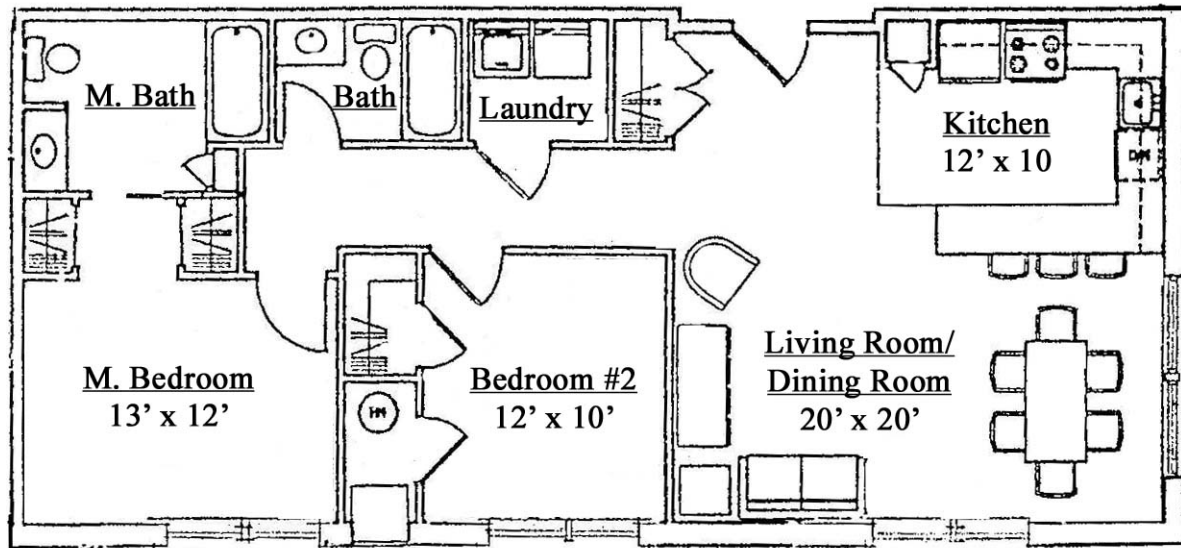


# Yalesville On the Green

*By Ahearn-Rogers LLC*

*Affordable Luxury in  
New Ranch Style Condominiums*

## Unit 36



**957 sq. ft.**

